
KCB6A6A6A6A0000V1XZ (ORDER NO. 020488)

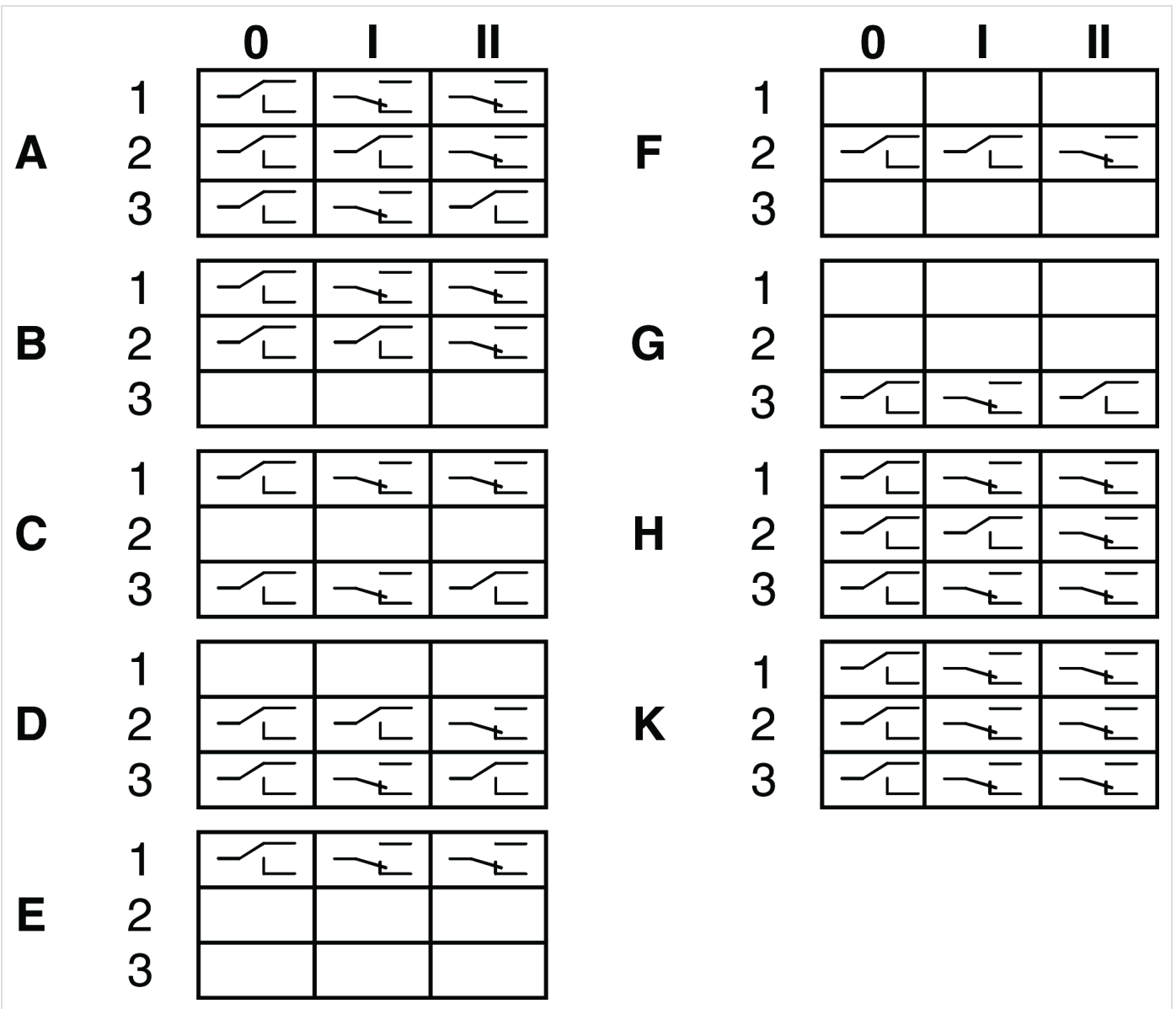
Series KC...

- ▶ Screw terminal
- ▶ 4 actuating directions
- ▶ Interlocking in switch position 1 to 2 (V1)
- ▶ Bellows for surface mounting (X)
- ▶ Center-position switch (Z)

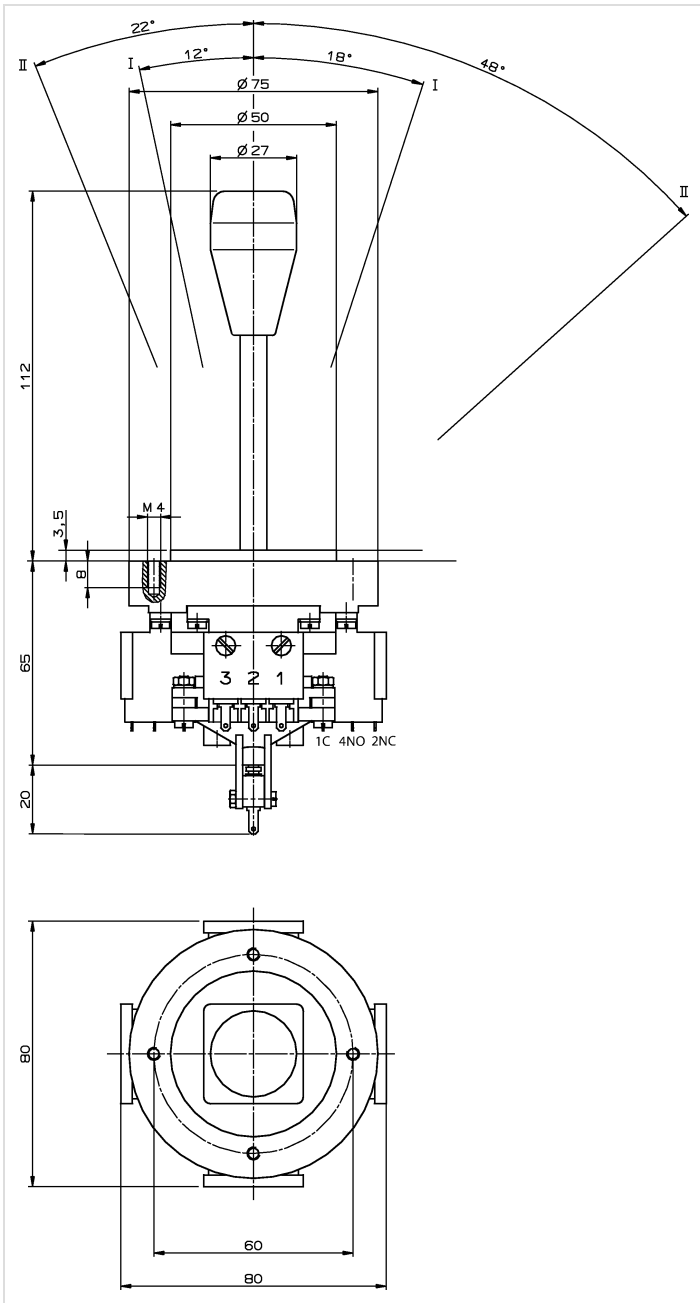


Description

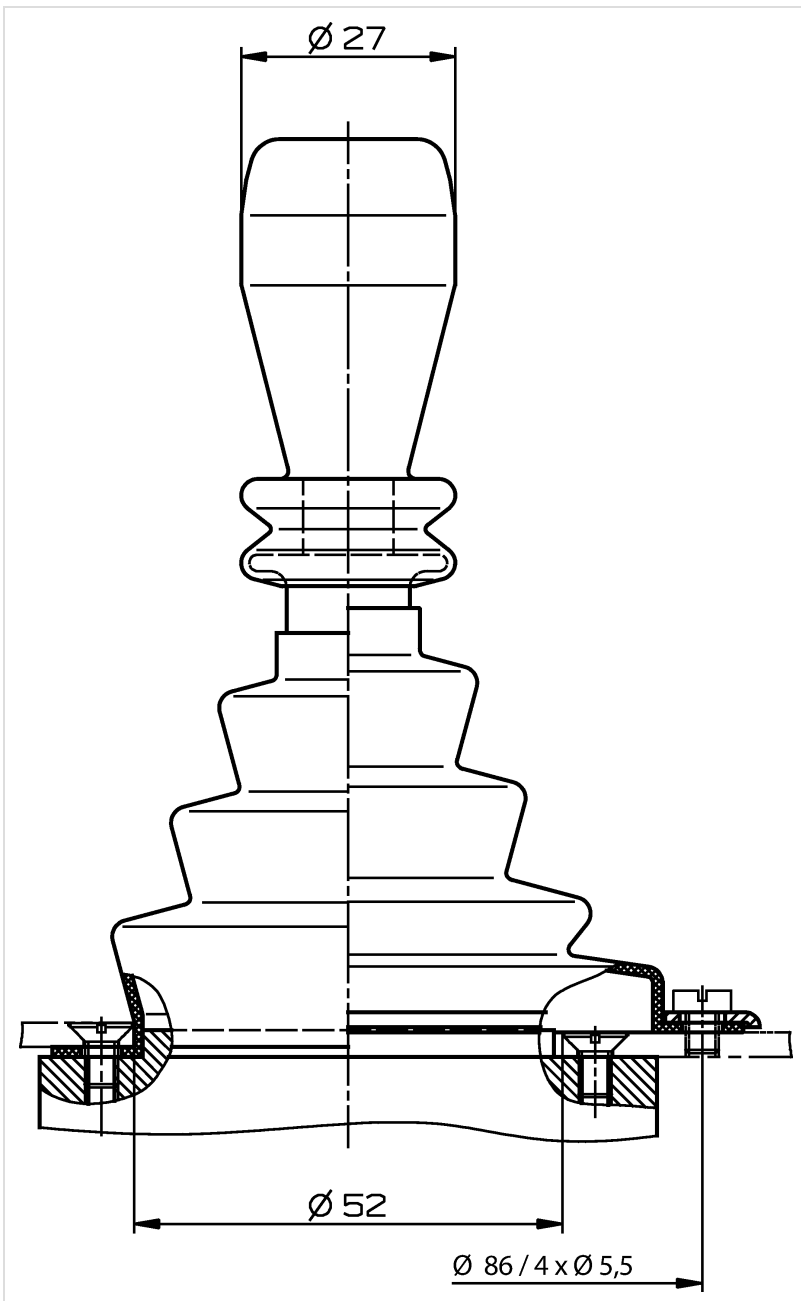
Function drawings



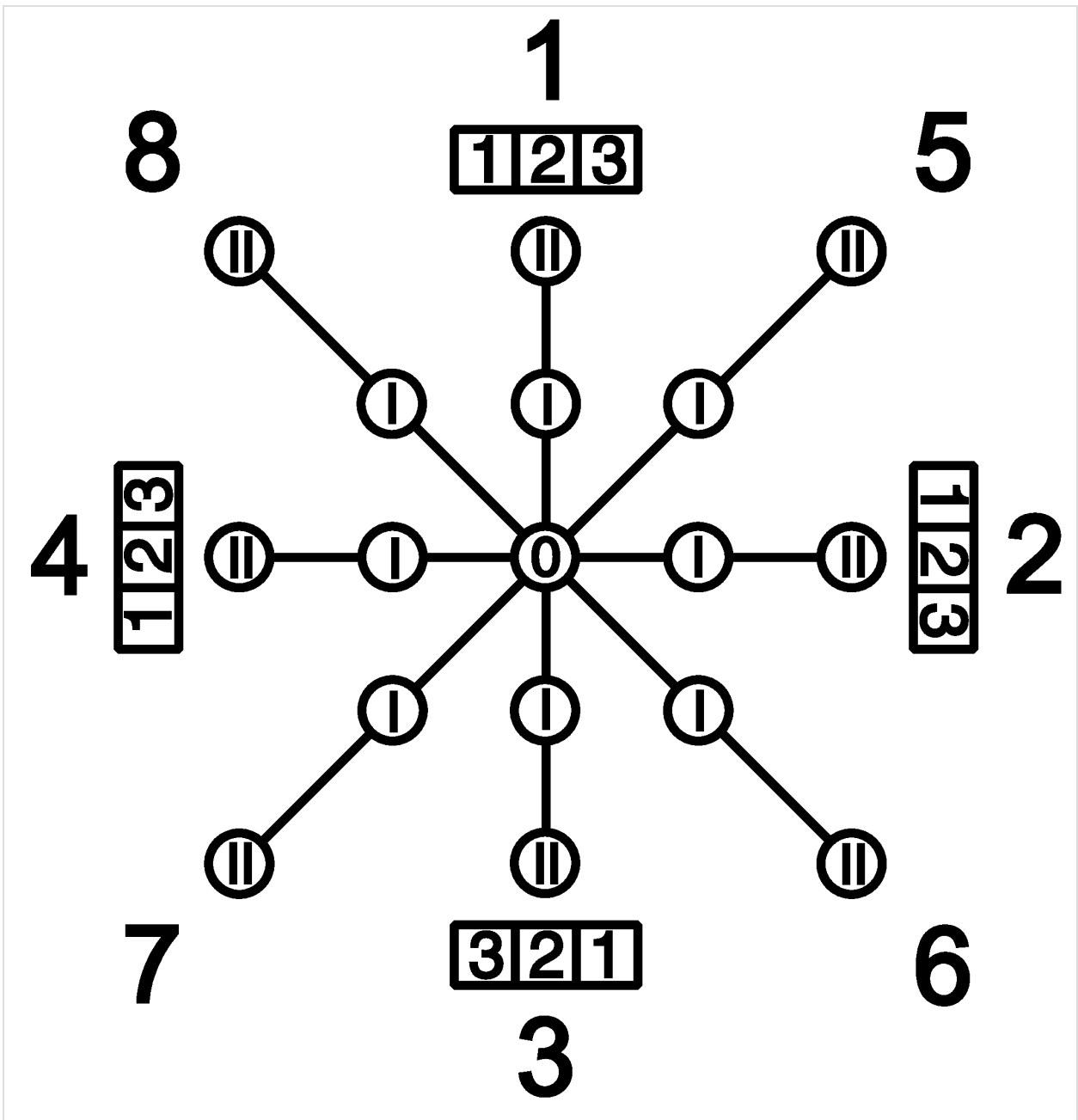
Dimension drawings



Dimension drawings

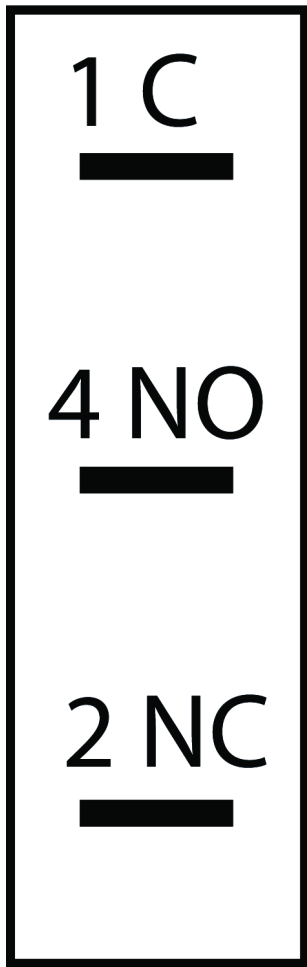


Connection examples



Connection examples

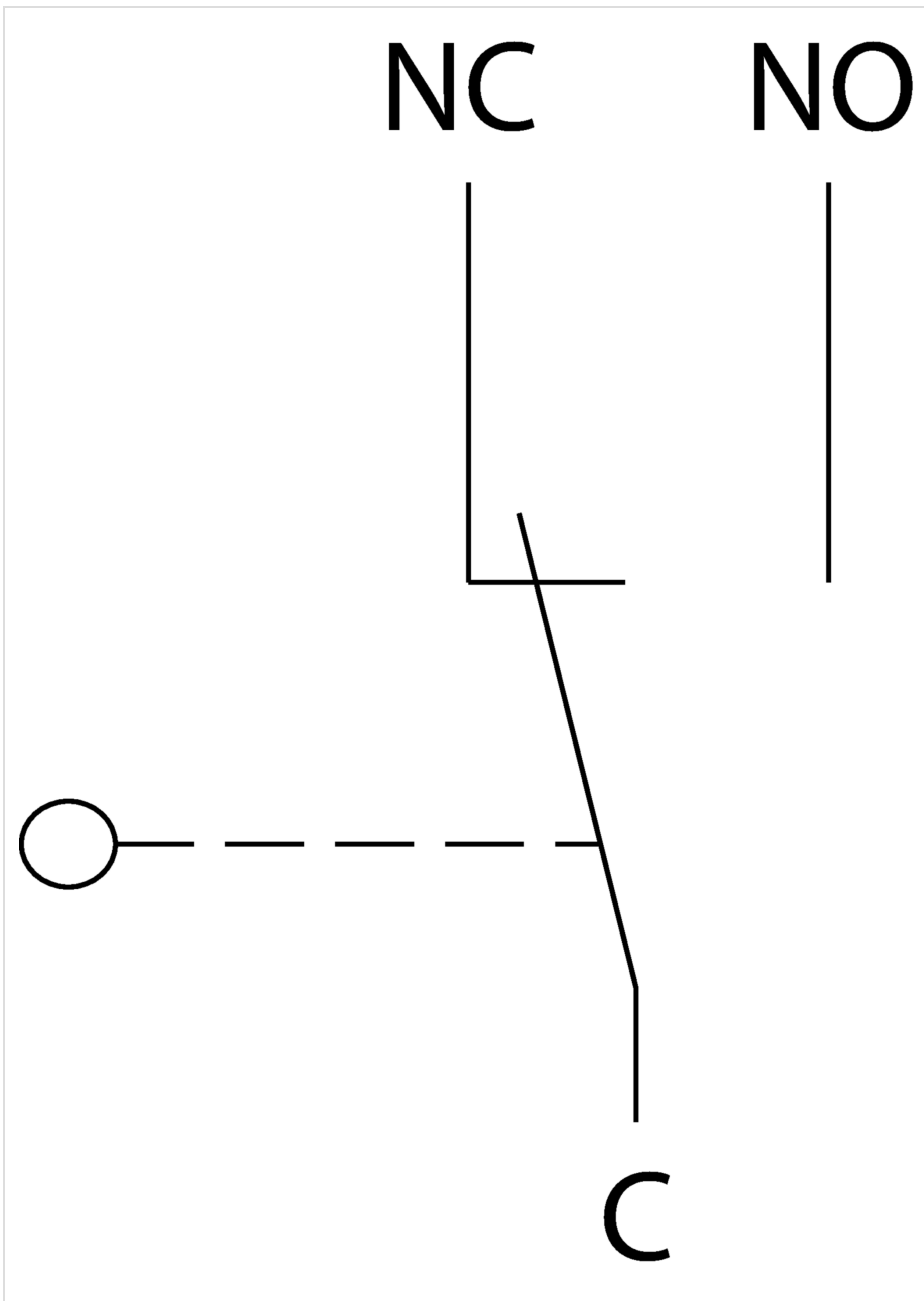
ES 587



ES 556



Connection examples



Technical data

Approvals



Electrical connection ratings

Rated impulse withstand voltage U_{imp}	2.5 kV
Rated insulation voltage U_i	250 V
Short circuit protection according to IEC 60269-1	T6/F10
Switching current	
	(at 24V) min. 12 mA
Switching voltage	min. 10 V
Utilization category	
	AC-15 230V 4A
	DC-13 24V 2A


Mechanical values and environment


Actuating directions	max. 4 max. 3 positions (0-1-2) possible per type and direction
Ambient temperature	-5 ... +65 °C
Center-position switch	1 changeover contact (NO contact closed, NC contact open in neutral position (not actuated))
Connection	Screw terminal
Degree of protection	
	on the front with bellows IP65 (Version X)
Material	
	Switching lever galvanized steel
	Housing thermoplastic/aluminum
	Bellows elastomer, black (Low PAH)
	Contact Silver alloy
Mechanical life	1 x 10 ⁶
Mounting type	Panel cut-out depending on version X or W (see panel cut-out drawing)
Number of monitoring contacts	max. 13 12 + 1 (4 directions x 3 switching elements and 1x Z contact)
Switching principle	Changeover contact C, IEC 947-5-1 (Snap-action contact element, design ES556)


Miscellaneous


Additional feature	
	Locking in position 1
	Bellows X for surface mounting

Contacts

 EUCHNER GmbH + Co. KG
 Kohlhammerstraße 16
 70771 Leinfelden-Echterdingen

 +49 711 7597-0

 +49 711 753316

 info(at)euchner.de