

**KCB5D005D000000X (ORDER NO. 052866)**

Series KC...

- ▶ Screw terminal
- ▶ 2 actuating directions
- ▶ Bellows for surface mounting (X)

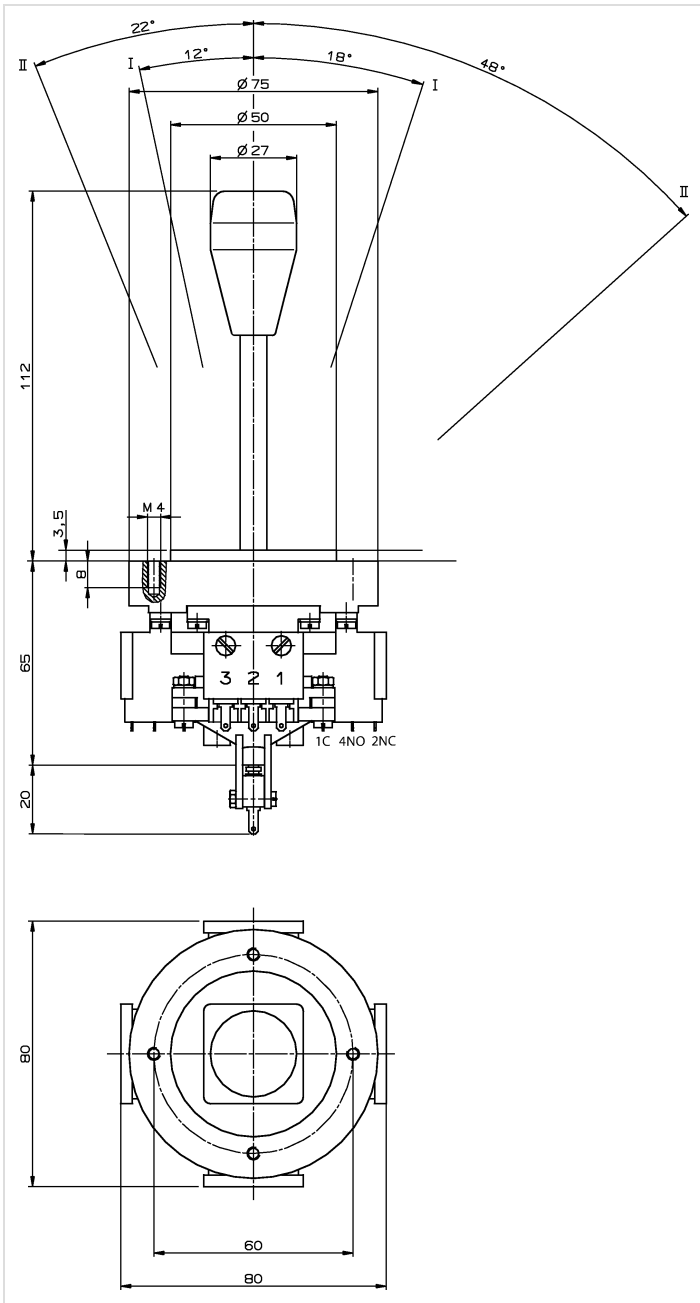


Description

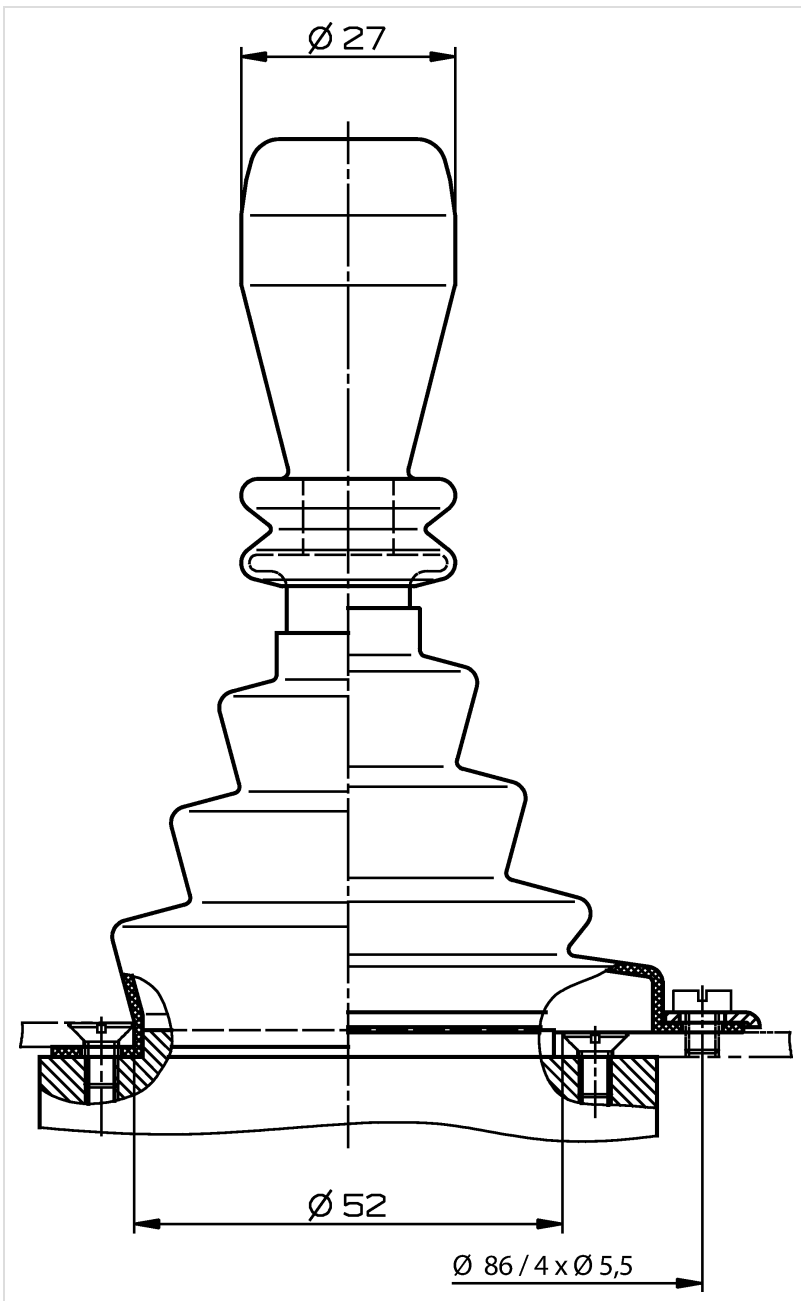
Function drawings

		0	I	II			0	I	II
<b>A</b>	1				<b>F</b>	1			
	2					2			
	3					3			
<b>B</b>	1				<b>G</b>	1			
	2					2			
	3					3			
<b>C</b>	1				<b>H</b>	1			
	2					2			
	3					3			
<b>D</b>	1				<b>K</b>	1			
	2					2			
	3					3			
<b>E</b>	1								
	2								
	3								

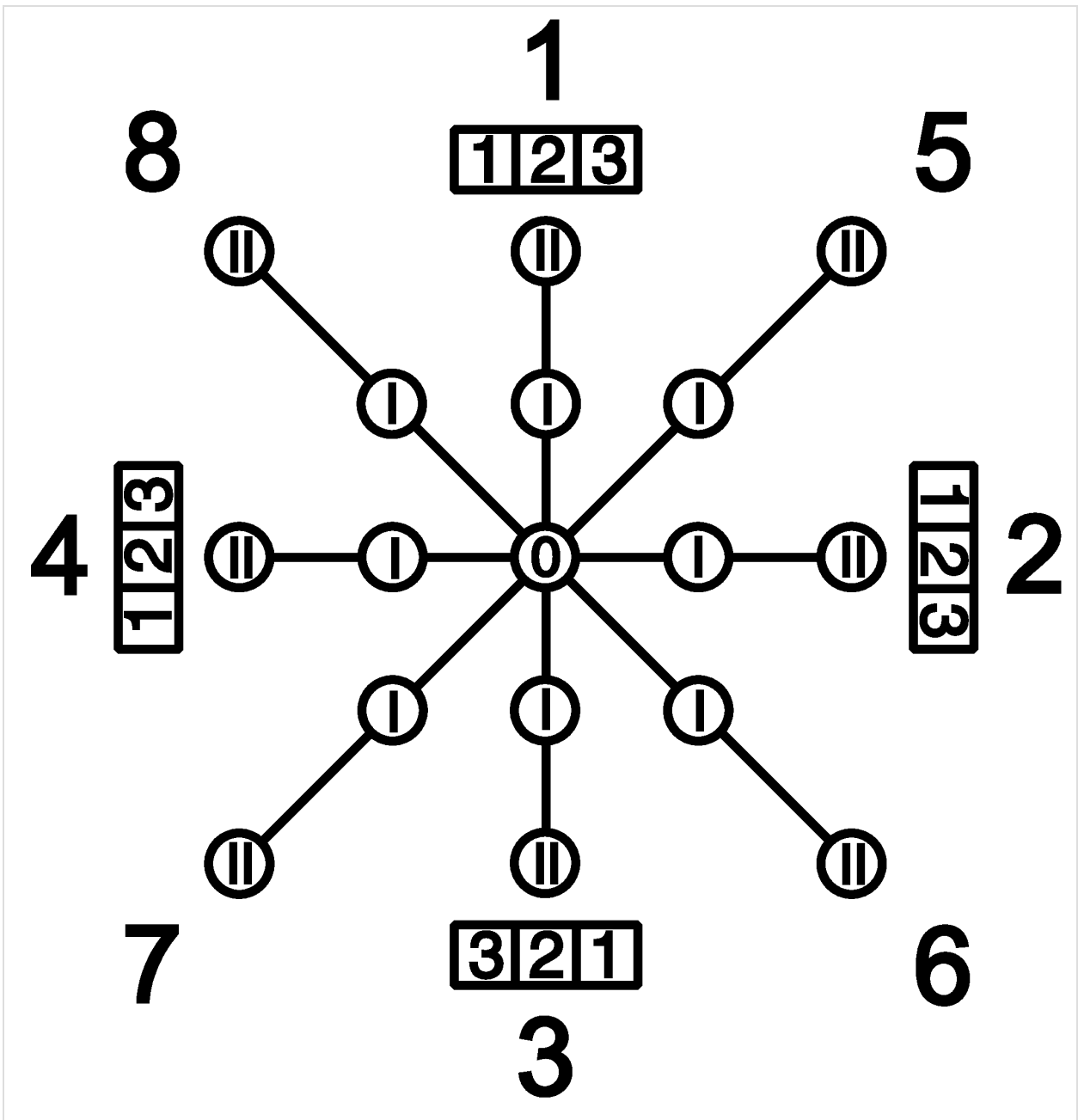
Dimension drawings



Dimension drawings

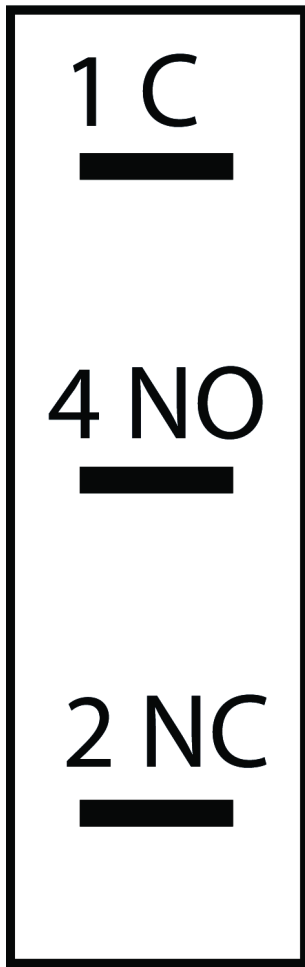


Connection examples



Connection examples

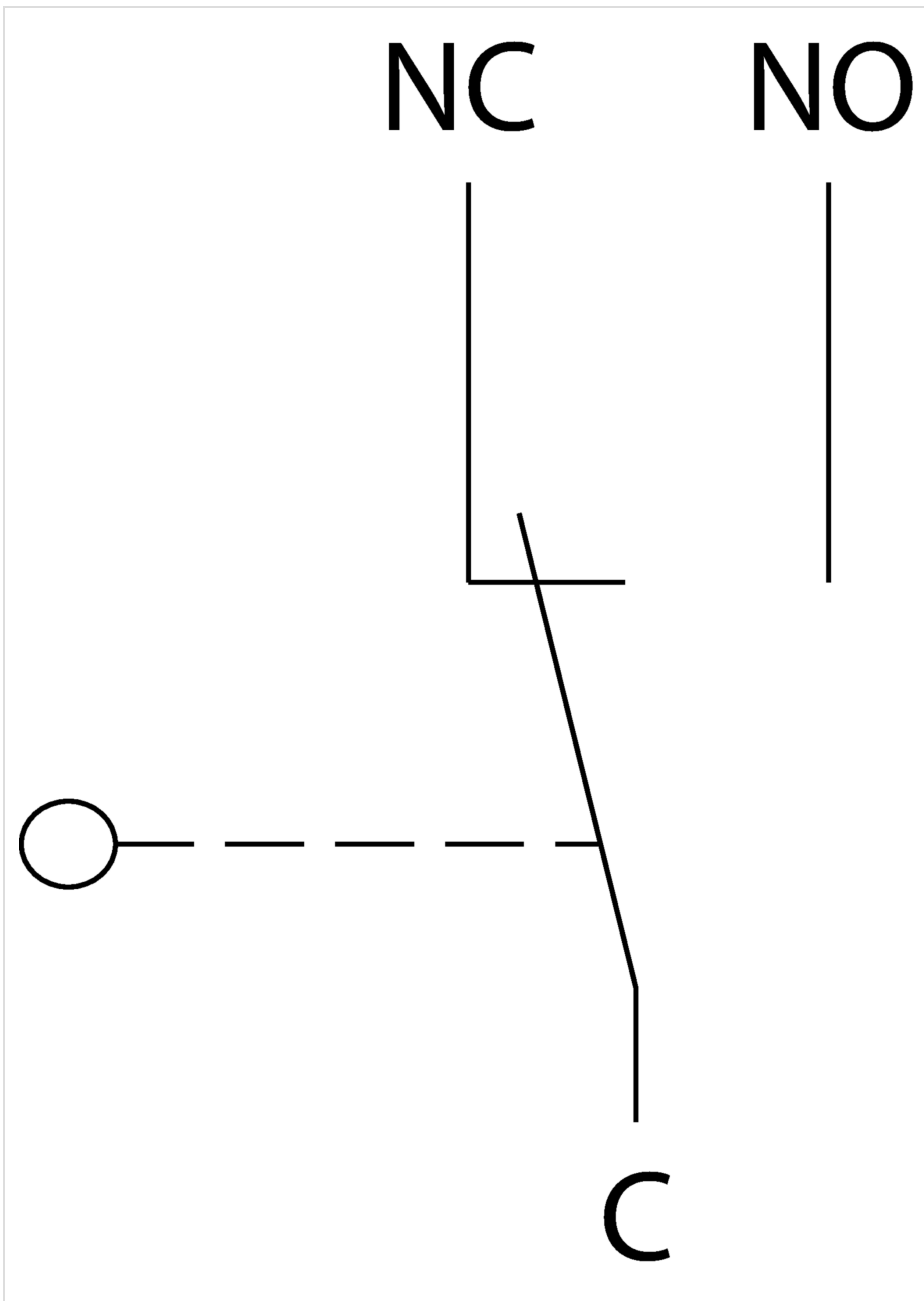
ES 587



ES 556



Connection examples



## Technical data

### Approvals



### Electrical connection ratings

Rated impulse withstand voltage $U_{imp}$	2.5 kV
Rated insulation voltage $U_i$	250 V
Short circuit protection according to IEC 60269-1	T6/F10
Switching current	
	(at 24V) min. 12 mA
Switching voltage	min. 10 V
Utilization category	
	AC-15 230V 4A
	DC-13 24V 2A


### Mechanical values and environment


Actuating directions	max. 2 max. 3 positions (0-1-2) possible per type and direction
Ambient temperature	-25 ... +65 °C
Connection	Screw terminal
Degree of protection	on the front with bellows IP65 (Version X)
Material	Switching lever galvanized steel
	Housing thermoplastic/aluminum
	Bellows elastomer, black (Low PAH)
	Contact Silver alloy
Mechanical life	1 x 10 <sup>6</sup>
Mounting type	Panel cut-out depending on version X or W (see panel cut-out drawing)
Number of monitoring contacts	max. 4 4 (2 directions x 2 switching elements)
Switching principle	Changeover contact C, IEC 947-5-1 (Snap-action contact element, design ES556)


## Miscellaneous


Additional feature	Bellows X for surface mounting
--------------------	--------------------------------

## Contacts

 EUCHNER GmbH + Co. KG  
 Kohlhammerstraße 16  
 70771 Leinfelden-Echterdingen

 +49 711 7597-0

 +49 711 753316

 info(at)euchner.de